

PART OF S.E. 1/4 OF N.E. 1/4
SECTION 20, T.6N., R.1W., S.L.B. & M.

IN OGDEN CITY
SCALE 1" = 50'

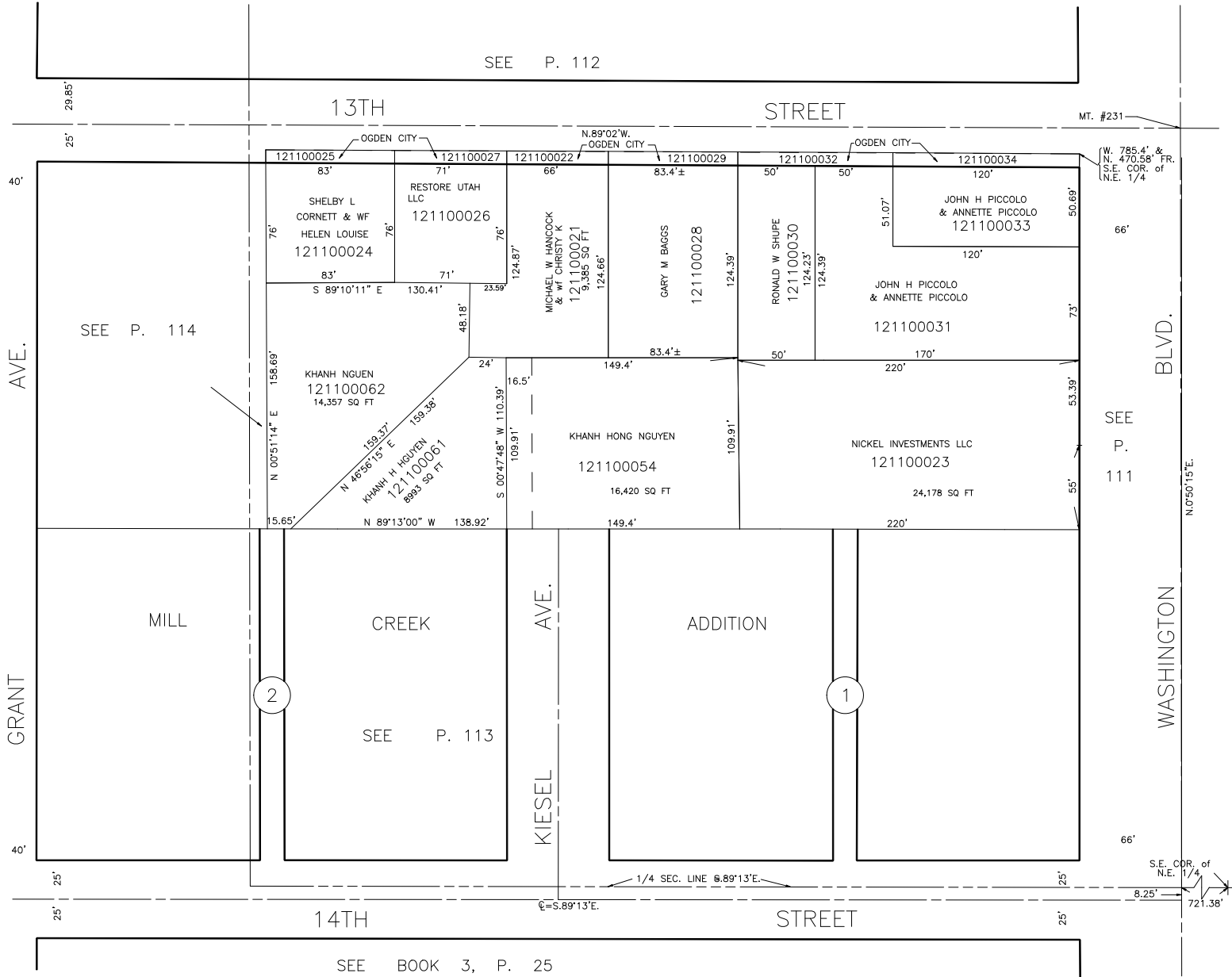
TAXING UNIT: 25

SEE P. 112

13TH STREET

STREET

MT. #231



SEE P. 114

121100025
SHELBY L
CORNETT & WF
HELEN LOUISE
121100024

121100027
RESTORE UTAH
LLC
121100026

121100022
MICHAEL W HANCOCK
& WF CHRISTY K
121100021
9,385 SQ FT

121100029
GARY M BAGGS
121100028

121100032
RONALD W SHUPE
121100030

121100034
JOHN H PICCOLO
& ANNETTE PICCOLO
121100033

KHANH NGUEN
121100062
14,357 SQ FT

KHANH H NGUYEN
121100061
8893 SQ FT

KHANH HONG NGUYEN
121100054
16,420 SQ FT

NICKEL INVESTMENTS LLC
121100023
24,178 SQ FT

40'

40'

25'

25'

2

1

14TH STREET

STREET

SEE BOOK 3, P. 25

BLVD.

WASHINGTON

SEE P. 111

N.0°50'15"E.

S.E. COR. of N.E. 1/4 8.25' 721.38'